

RRC-RETRACTABLE RAIL CLAMPS



RRC releases and retracts the mechanism completely above the rail head; no mechanical guiding means at rail level. Designed for modern high speeds cranes.

RRC Retractable Rail Clamps are designed to clamp on both sides of a rail.

They are spring set and hydraulically OR electrically released.



Applications:

- Ship to shore cranes
- Automated stacking cranes
- Wide Span Cranes
- Shiploaders
- Rail-mounted material handling equipment

Benefits

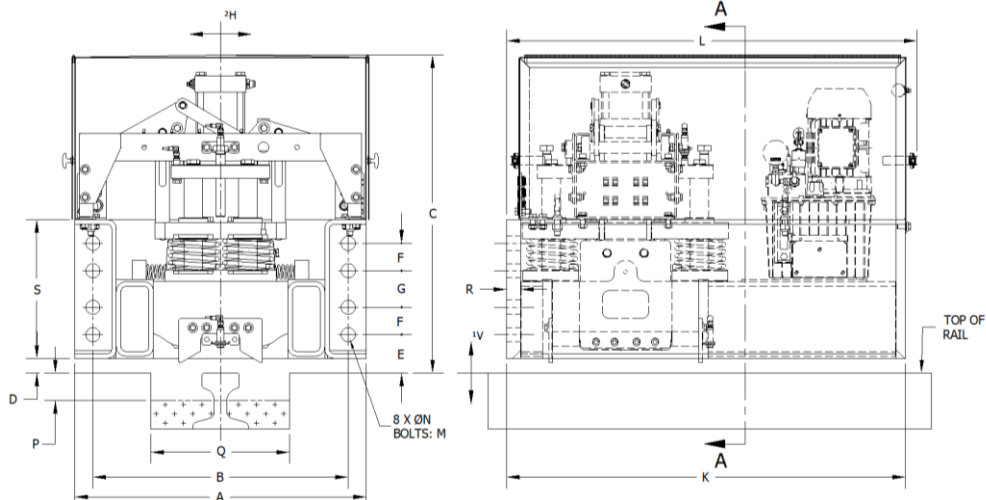
- Simple single cylinder solution that lifts all the critical components completely free of the rail
- Serrated shoes protected from hitting the rail sides, no wear and tear to guide means, brake shoes or rail head itself
- Top suspended mechanism allows for very low mechanism float friction forces, no need for lubrication points
- Low friction mechanism stability device, allows for reliable setting of the rail clamp mechanism and positioning on a rail
- Floating mechanism allowing compensation of horizontal $\pm 30\text{mm}$ and vertical $\pm 25\text{mm}$ rail deviation (more available upon request)
- Top mounted hydraulic cylinder with no rod connection, easily removable for quick maintenance and replacement
- Clamp release, positioning and reserve stroke monitoring by proximity switches
- As result of the above mentioned improvements, reliability and safety are increased while maintenance costs are lower



**RRC-HS Spring Set, Hydraulic Release Rail Clamp shown
RRC-ES Spring Set, Electric Release Rail Clamp available**

STANDARD FEATURES

- SF Side Flange mount to the crane structure
- TF Top Flange mount available (50 to 700 kN)
- Stainless steel removable cover with inspection doors (SF)
- Caging bolts for mechanical release
- Paint system for C4 environment and 5 years warranty
- Lifting Eye Bolts
- Prewired controls junction box
- Hand pump and caging bolts for manual release
- Solenoid valve with manual override
- Solenoid coil with LED indicator
- Integrated Temperature/Level Switch
- Adjustable setting time from 2-30 seconds



MODEL	HOLDING CAPACITY (kN)	A	B	C	D	E	F	G	K	L	M	N	P	*Q	R	S
RRC-HS-050-SF	50															
RRC-HS-100-SF	100	578	530	735	30	75	50	65	860	885	20	22	70	280	22	254
RRC-HS-125-SF	125															
RRC-HS-150-SF	150															
RRC-HS-200-SF	200															
RRC-HS-250-SF	250	705	635	785		85	65	90	860	885	27	29	75	340	32	310
RRC-HS-300-SF	300															
RRC-HS-350-SF	350															
RRC-HS-400-SF	400															
RRC-HS-450-SF	450															
RRC-HS-500-SF	500	800	700	870	40	105	75	100	1095	1125	36	39	75	380	38	380
RRC-HS-600-SF	600															
RRC-HS-700-SF	700															
RRC-HS-800-SF	800															
RRC-HS-900-SF	900	850	730	1000		120	110	170	1210	1240	39	42	75	380	38	580
RRC-HS-1000-SF	1000															
RRC-HS-1200-SF	1200	900	780	1050		115	100	180	1400	1430	42	45	75	400	45	530

*Q – Dimensions are subject to a specific rail size.
 1 V-Vertical Rail Deviation (Float) ±25 relative to Rail Clamp enclosure at full rated capacity.
 2 H-Horizontal Rail Deviation (Float) ±30 relative to Rail Clamp enclosure at full rated capacity. Larger floats available upon request.
 Models with holding capacities calculated with friction factor 0.5. Models with holding capacities calculated with friction factor 0.25 available upon request.
 All dimensions (mm) and capacities (kN) subject to change without notification.