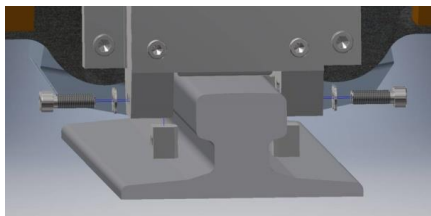


GRC-GUIDED RAIL CLAMPS



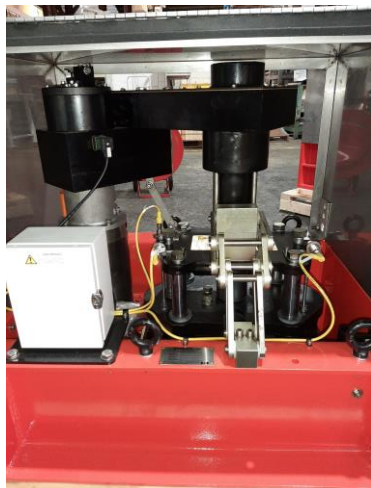
GRC Rides on the rail on two hardened flangeless cylindrical rollers, guided by hardened steel guides. Capable to accommodate rail with large vertical fluctuations.

GRC Guided Rail Clamps are designed to clamp on both sides of a rail. They are spring set and hydraulically OR electrically released.



Applications:

- Ship to shore cranes
- Automated stacking cranes
- Wide Span Cranes
- Shiploaders
- Stacker Reclaimers
- Tripper Cars



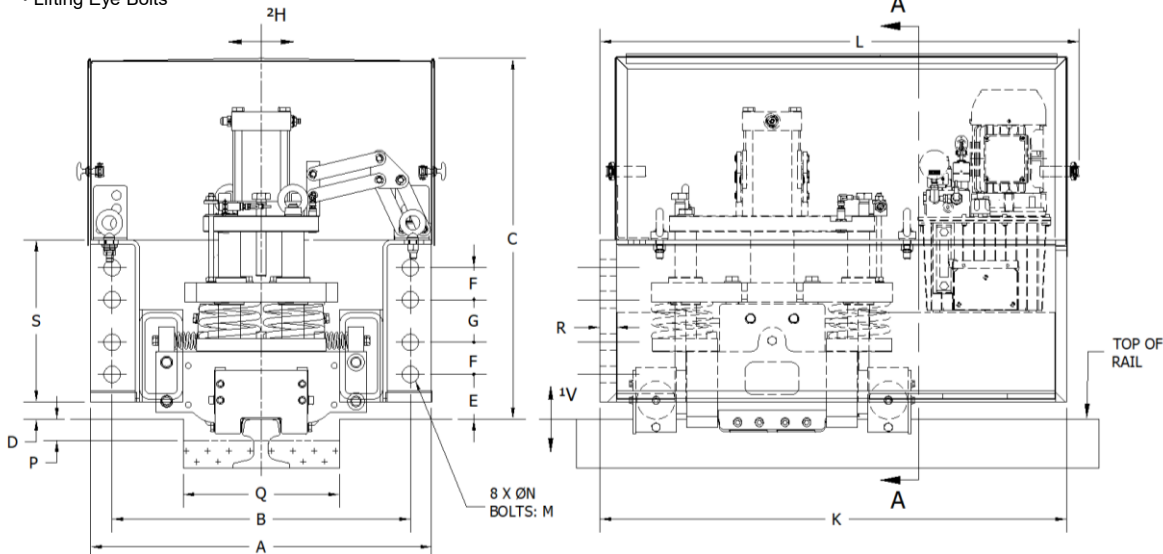
Benefits

- Rail Clamp mechanism weight is distributed to two hardened, low friction flangeless Cylindrical Rollers.
- Top mounted hydraulic cylinder with no rod connection, easily removable for quick maintenance and replacement
- Serrated shoes protected from hitting the rail sides; limited wear and tear to guide means, brake shoes as well as rail head itself
- No need for lubrication points for the floating mechanism
- Simple design eliminates expensive replacement of profiled guide wheels with worn-out flanges
- Floating mechanism allowing compensation of horizontal $\pm 30\text{mm}$ and vertical $\pm 25\text{mm}$ rail deviation (more available upon request)
- Clamp release and reserve stroke monitoring by proximity switches
- As result of the above mentioned improvements, reliability and safety are increased while maintenance costs are lower

GRC-Spring Set, Hydraulic Release Rail Clamp shown
GRC-Spring Set, Electric Release Rail Clamp available

STANDARD FEATURES

- SF Side Flange mount to the crane structure
- TF Top Flange mount available (50 to 700 kN)
- Stainless steel removable cover with inspection doors (SF)
- Caging bolts for mechanical release
- Paint system for C4 environment and 5 years warranty
- Lifting Eye Bolts
- Prewired junction box
- Hand pump and caging bolts for manual release
- Solenoid valve with manual override
- Solenoid coil with LED indicator
- Integrated Temperature/Level Switch
- Adjustable setting time from 2-30 seconds



MODEL	HOLDING CAPACITY (kN)	A	B	C	D	E	F	G	K	L	M	N	P	*Q	R	S
GRC-HS-050-SF	50															
GRC-HS-100-SF	100	578	530	735	30	75	50	65	860	885	20	22	50	280	22	254
GRC-HS-125-SF	125															
GRC-HS-150-SF	150															
GRC-HS-200-SF	200															
GRC-HS-250-SF	250	705	635	785		85	65	90	860	885	27	29	50	340	32	310
GRC-HS-300-SF	300															
GRC-HS-350-SF	350															
GRC-HS-400-SF	400															
GRC-HS-450-SF	450				40											
GRC-HS-500-SF	500	800	700	870		105	75	100	1095	1125	36	39	50	380	38	380
GRC-HS-600-SF	600															
GRC-HS-700-SF	700															
GRC-HS-800-SF	800															
GRC-HS-900-SF	900	850	730	1000		120	110	170	1210	1240	39	42	50	380	38	580
GRC-HS-1000-SF	1000															

*Q – Dimensions are subject to a specific rail size
 1 V-Vertical Rail Deviation (Float) ±25 relative to Rail Clamp enclosure at full rated capacity.
 2 H-Horizontal Rail Deviation (Float) ±30 relative to Rail Clamp enclosure at full rated capacity. Larger floats available upon request.
 Models with holding capacities calculated with friction factor 0.5. Models with holding capacities calculated with friction factor 0.25 available upon request.
 All dimensions (mm) and capacities (kN) subject to change without notification.