

LRC - LIMITED RAIL CLAMPS

LRC is guided by hardened steel guides along the rail. Designed for cranes riding on a rail with minimum vertical fluctuations.



LRC Limited Rail Clamps are designed to clamp on both sides of a rail. They are spring set and hydraulically OR electrically released.



Applications:

- Ship to shore cranes
- Automated stacking cranes
- Wide Span Cranes
- Shiploaders
- Stacker Reclaimers
- Tripper Cars

Benefits

- Rail Clamp mechanism guided along the rail with hardened steel guiding blocks
- Top mounted hydraulic cylinder with no rod connection, easily removable for quick maintenance and replacement
- Serrated shoes protected from hitting the rails sides by guiding blocks
- No need for lubrication points for the floating mechanism
- Simple design eliminates expensive replacement of profiled guide wheels with worn-out flanges
- Floating mechanism allowing compensation of horizontal $\pm 30\text{mm}$ and vertical $\pm 5\text{mm}$ rail deviation
- Clamp release indication signal provided by proximity switch
- Simple mechanism with small number of moving parts for easy maintenance

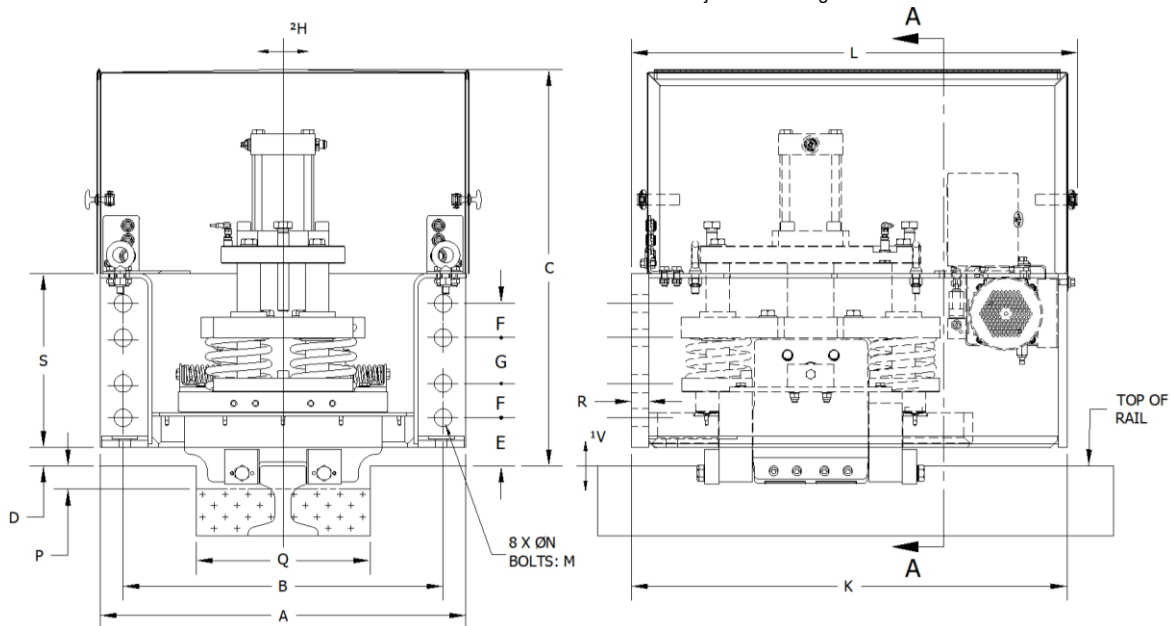


LRC-Spring Set, Hydraulic Release Rail Clamp shown
LRC-Spring Set, Electric Release Rail Clamp available

STANDARD FEATURES

- SF Side Flange mounting to the crane structure
- TF Top Flange mount available
- Stainless steel cover (SF model)
- Paint system for C4 environment and 5 years warranty

- Prewired junction box
- Hand pump and/or caging bolts for manual release
- Solenoid valve with manual override
- Solenoid coil with LED indicator
- Integrated Temperature/Level Switch (150-650kN)
- Adjustable setting time from 2-30 seconds



MODEL	HOLDING CAPACITY (kN)	A	B	C	D	E	F	G	K	L	M	**N	P	*Q	R	S
LRC-HS-50-SF	50	540	470	665	30	60	140	x	681	x	24	26	50	300	22	203
LRC-HS-100-SF	100															
LRC-HS-150-SF	150															
LRC-HS-200-SF	200															
LRC-HS-250-SF	250	705	635	700	40	85	65	90	860	884	27	29	50	350	32	310
LRC-HS-300-SF	300															
LRC-HS-350-SF	350															
LRC-HS-400-SF	400	800	700	860	40	105	75	100	955	985	36	39	50	380	38	380
LRC-HS-450-SF	450															
LRC-HS-500-SF	500															
LRC-HS-600-SF	600	800	700	860	40	105	75	100	955	985	36	39	50	380	38	380
LRC-HS-650-SF	650															

*Q – Dimensions are relative to a specific rail size.
 **N – LRC-50/100 series come with four holes bolt pattern.
 1 V-Vertical Rail Deviation (Float) ±5 relative to Rail Clamp enclosure at full rated capacity.
 2 H-Horizontal Rail Deviation (Float) ±30 relative to Rail Clamp enclosure at full rated capacity. Larger floats available upon request.
 Models with holding capacities calculated with friction factor 0.5. Models with holding capacities calculated with friction factor 0.25 available upon request.
 All dimensions (mm) and capacities (kN) subject to change without notification.