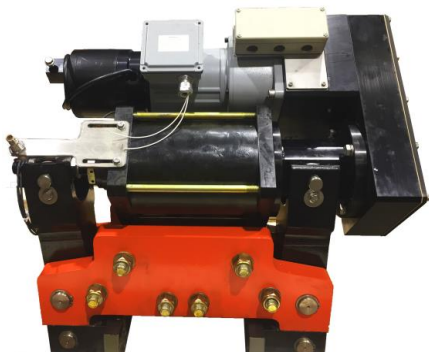
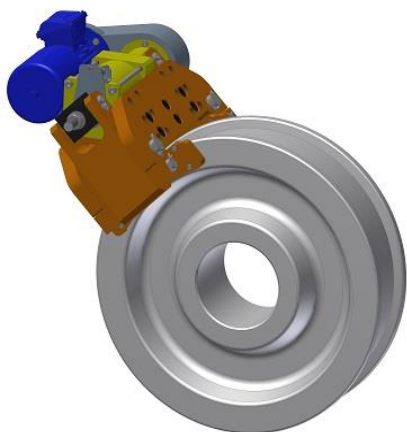


EWB WHEEL BRAKES - ELECTRIC RELEASE



WB Wheel Brakes apply force generated by springs on the both sides of crane wheels. Oversized brake shoes with bonded friction material apply on the side flanges of idler wheels, providing the friction forces, and thus, braking capacity.

Designed as parking brakes to be applied when equipment comes to a full stop, WB wheel brakes can be also used as dynamic brakes in an emergency situation (e-stop). By applying spring force directly on the wheel flanges, they minimize the amount of stress and strain otherwise placed on sill beams and truck assemblies of a crane.



Applications:

- Ship to shore cranes
- Automated stacking cranes
- Wide Span Cranes
- Rail Mounted Gantry Cranes
- Log Handling Cranes
- Ship Loaders



Benefits

- Spring Set – patented fully Electric Release
- No hydraulic components, so no environmental or fire liabilities
- High efficiency actuator for spring applied braking devices utilize an electro-mechanical release and hold system
- Actuator holding brake in sealed enclosure and with low power consumption, keeps wheel brake pads released until power is cut-off or lost
- Setting time can be adjusted by a mechanical regulator for setting time delay from 3 to 30 seconds
- The regulator does not use friction and is free from wear
- Brake release monitored by proximity switch
- Equipped with shoe alignment device
- Maximum pad wear is 6mm per side

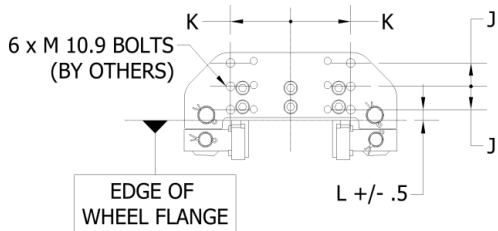
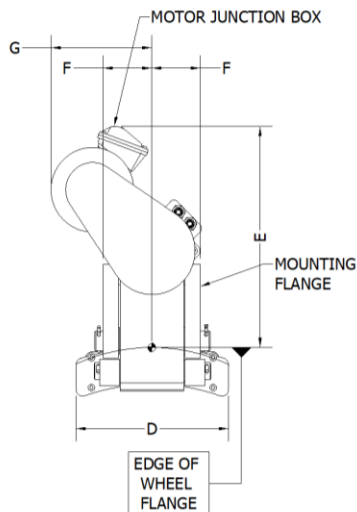
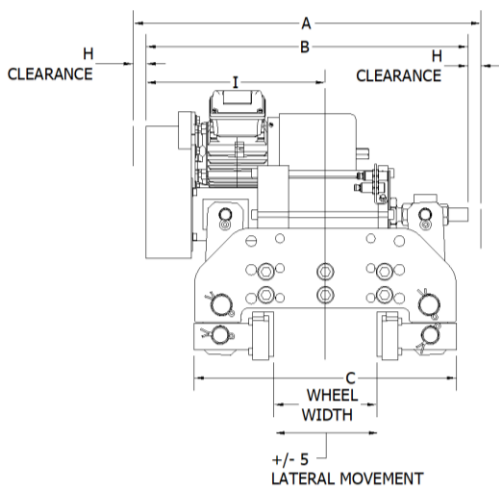
EWB-Electric Wheel Brake Dynamic Spring Set, Electric Release shown

STANDARD FEATURES

- Fabricated from high quality structural steel.
- Brake shoes easily removed and replaced
- Paint system for C4 environment and 5 years warranty

SUPPLIED WITH BRELX LINEAR ACTUATOR

- High efficiency actuators
- Supplied with release nut for mechanical brake release
- All electric drive components are easily accessible and removable
- Electric actuator drive is easy to understand and service



MODEL	HOLDING CAPACITY (kN)	A	B	C	D	E	F	G	H	I	J	K	L	M
EWB-30-A	30	735	675	500	315	475	75	250	30	380	50	125	25	M20
EWB-30-B											57	89	26	M20
EWB-60-A	60	707	647	501	315	475	75	250	30	380	50	125	25	M20
EWB-60-B											57	89	26	M20
EWB-90-A	90	735	675	550	315	508	110	250	30	361	55	145	30	M24
EWB-90-B											57	89	26	M20
EWB-120-A	120	735	675	550	315	508	110	250	30	361	55	145	30	M24
EWB-120-B											57	89	26	M20

Dynamic models braking capacities calculated with coefficient of friction factor 0.4
 All dimensions (mm) and capacities (kN) subject to change without notification.