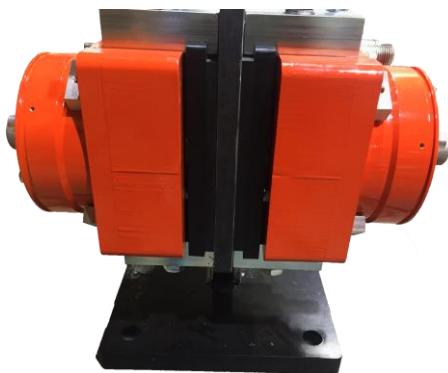


HEB – Hydraulic Emergency Brake



HEB is spring applied and hydraulic released emergency brake. Braking force is directly applied to the brake shoes by a high capacity spring pack. The organic brake friction shoes press on the both sides of a rotating steel disc, providing the friction forces and thus braking capacity. Emergency Brakes are imperative for crane safety.



Hydraulic Emergency Brakes are used on the low-speed shaft side of a drive and must provide sufficient torque to overcome a low-speed failure such as a gearbox, coupling, or other transmission failure. They apply braking torque on a disc bolted to the drum flange in order to stop or hold the load.

Applications:

- Ship to shore cranes
- Ship Loaders / Unloaders
- Crane Systems/Winches
- Conveyor Drives
- Hot Metal Cranes



Features and Benefits

- Spring Set – Hydraulic Release
- Consists of two identical caliper halves
- Direct acting pushes piston against the brake pad
- Compact design with few moving parts
- 1mm air gap per side
- Fast response time for maximum safety
- Fast and easy adjustment of pad wear
- Convenient lining replacement
- Made with high quality structural steel

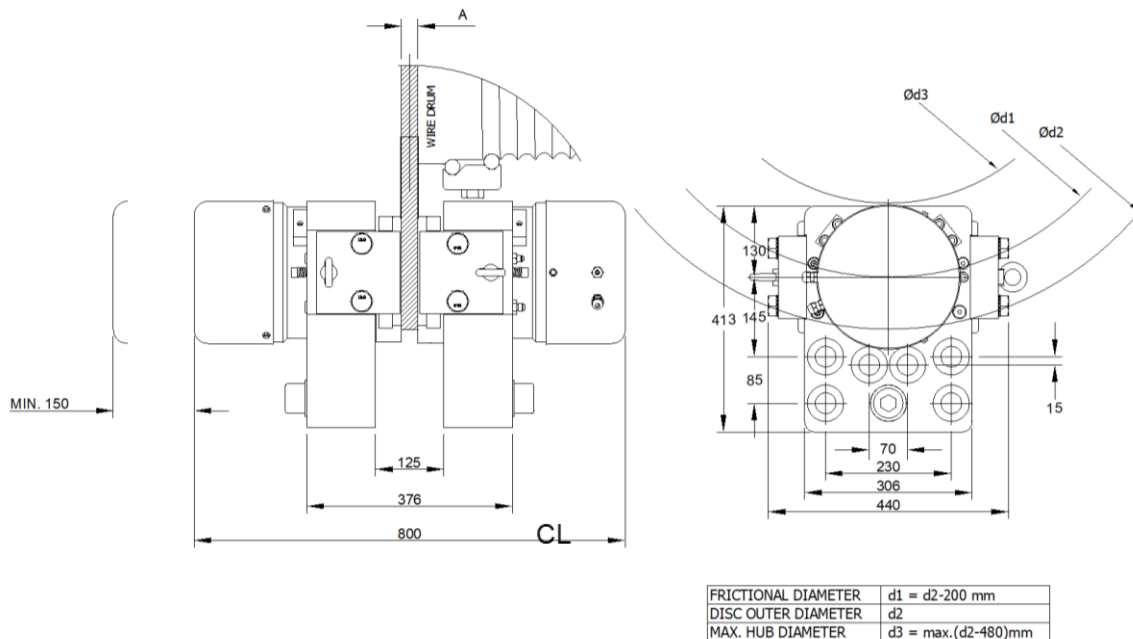
HEB- Hydraulic Emergency Brake Spring Set, Hydraulic Release

STANDARD FEATURES

- Proximity switch for release indication signal
- G3/8 BSPP hydraulic oil port
- G3/8 BSPP air bleed port for maintenance
- Maximum pad wear 8mm
- Paint system for C4 environment and 5 years warranty
- Caging bolt for mechanical release

AVAILABLE OPTIONS

- Proximity switch for lining wear
- Hydraulic Power Unit
- Hose and fitting package
- Mounting stand
- Paint system for highly corrosive environments
- Hydraulic oil drain ports on cylinders



MODEL	CONTACT FORCE caliper half (kN)	BRAKING FORCE @ $\mu=0.4$ (kN)	RELEASE PRESSURE (bar)	MAXIMUM PRESSURE (bar)	OIL VOLUME/1mm STROKE / caliper half (cm ³)	WEIGHT (kg)
HEB-250	250	200	130	160	20.4	540
HEB-290	290	232	150	170	20.4	540

MODEL	NUMBER OF MOUNTING BOLTS	SIZE M	GRADE CL	TORQUE (Nm)
HEB-250	6	36	10.9	2560 ± 150
HEB-290	6	36	10.9	2560 ± 150

Models with holding capacities calculated with friction factor 0.4
All dimensions (mm) and capacities (Nm) subject to change without notification.